



INTEGRA



G* GRASS®

INTEGRA STEEL DRAWER SYSTEM

Integra single-wall steel drawer system offers top quality and maximum functionality.





Track-proven quality and maximum benefits The single wall drawer system with metal sides

The single-wall steel drawer system that offers a range of design options.

Integra offers solutions for flexible production and provides a track proven record of quality in a variety of applications. The features for Integra include a dynamic load capacity of 100 lb, a parallel self-closing feature, and quick bottom mounting. A selection of standard drawers and deep drawers, pull-out shelves and soft-close adapters, and custom sizable Pendaflex filing systems complete the Integra program. Top quality and maximum functionality create a perfect drawer.



Table of Content

	Description	Adjustment	Page
	Integra Features and Benefits		4
	Integra Technical Information		6
	Integra 9313 <ul style="list-style-type: none"> • 149mm (5 7/8") Side Height • Integrated drawer slide and side 	<ul style="list-style-type: none"> • Height adjustment $\pm 2.0\text{mm}$ via cam • Side adjustment $\pm 2.0\text{mm}$ 	8
	Integra 9113 <ul style="list-style-type: none"> • 85mm (3 3/8") Side Height • Integrated drawer slide and side 	<ul style="list-style-type: none"> • Height adjustment $\pm 2.0\text{mm}$ via cam • Side adjustment $\pm 2.0\text{mm}$ 	10
	Integra Soft-close <ul style="list-style-type: none"> • Liquid damper for improved performance 	<ul style="list-style-type: none"> • Height adjustment $\pm 2\text{mm}$ via elongated hole 	12
	Roller Slide 1700/1702 <ul style="list-style-type: none"> • Single extension slide for Pull-out shelf • Bottom mount slide 		14
	Integra Interior Drawer		15
	Integra 3595 Pendaflex File Railing <ul style="list-style-type: none"> • File Railing Set • Easy to construct 		16
	Accessories and Assembly Aids		17

Features and Benefits

Integra

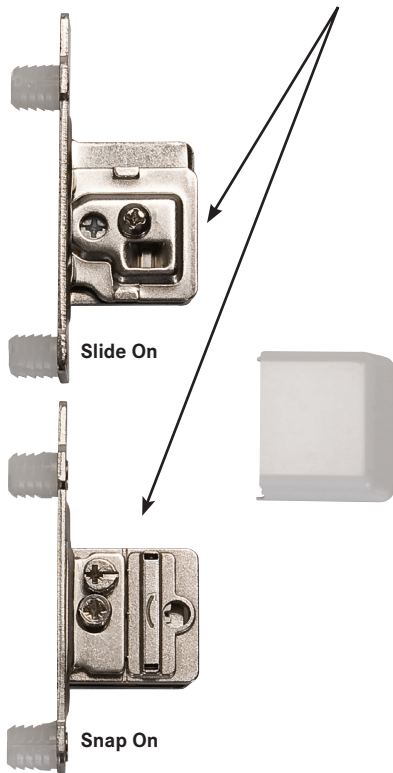
Features



- 2-Dimensional front adjustment
- Snap on bottom mounting
- Parallel self-closing feature
- Double stop
- Installation width 15.5mm (5/8")
- Load capacity: 100 lb dynamic, 125 lb static

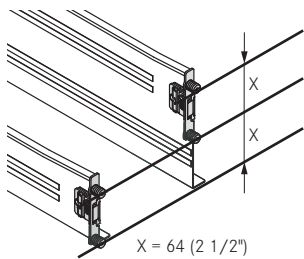
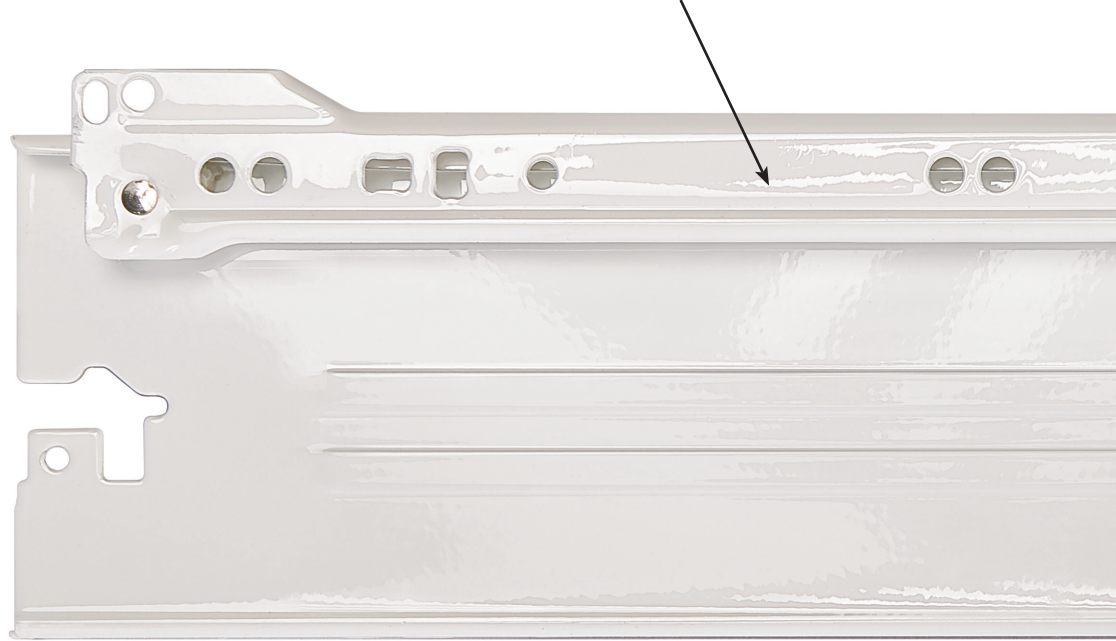
Two front fixing bracket choices

provide simple adjustments of drawer front gap



Smooth running

properties and self-closing action provides optimum durability

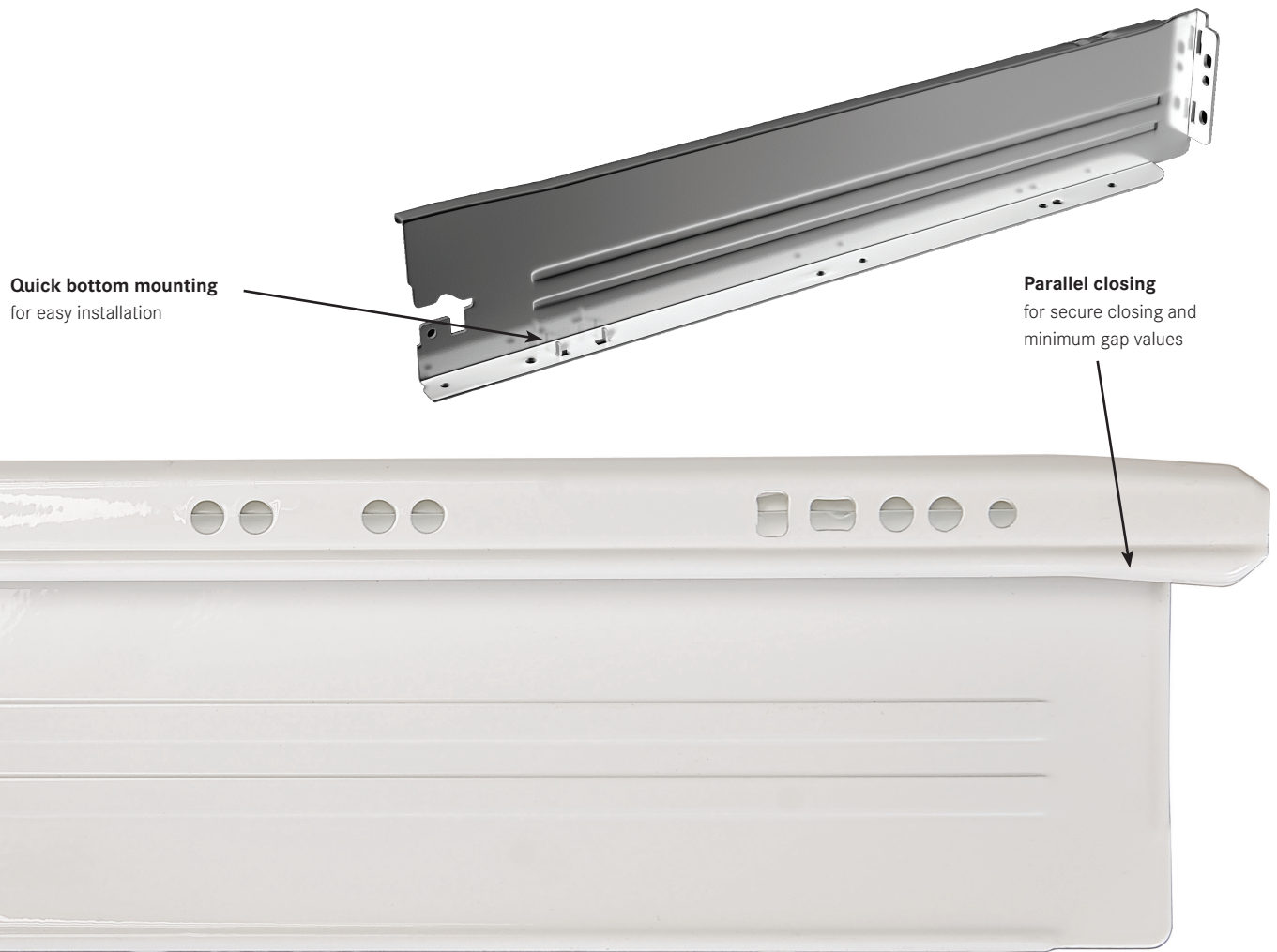


Height of drawer sides

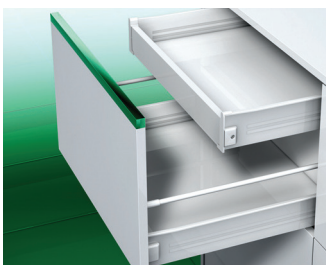
in 32mm increments, makes cabinet design easy.

Features

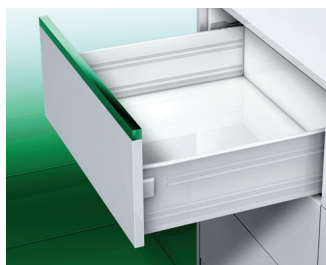
- Available in 2 drawer heights:
 - 85mm (3 3/8")
 - 149mm (5 7/8")



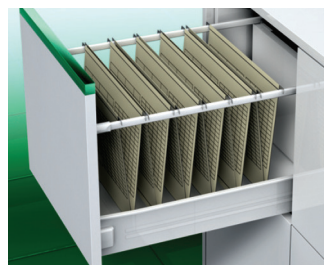
Interior Drawers



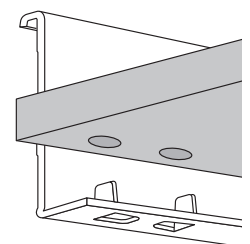
Deep Drawers



Hanging File Rail



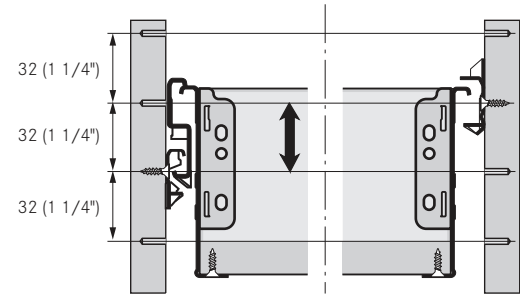
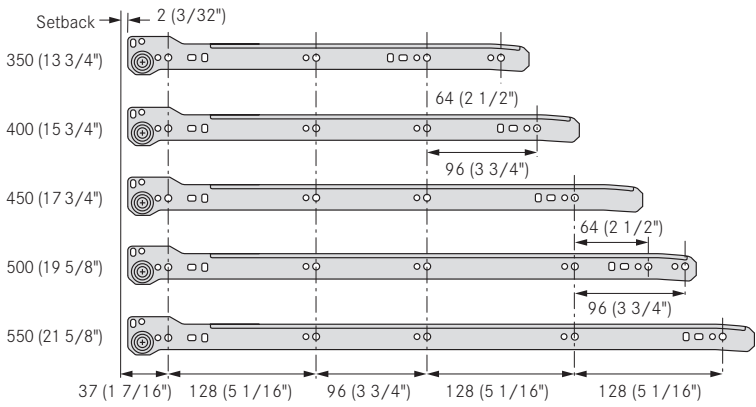
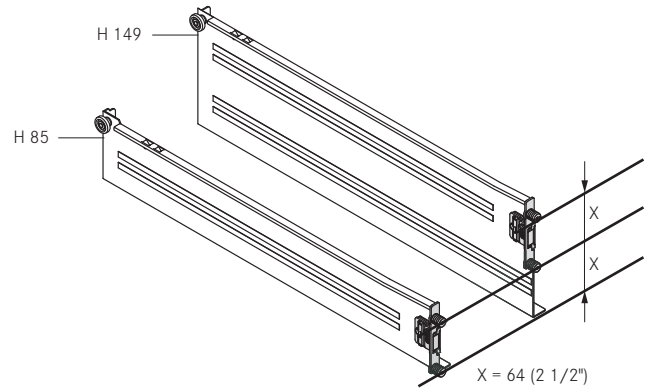
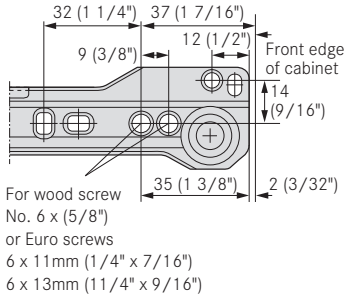
Quick Bottom Mounting



Technical Information

Integra

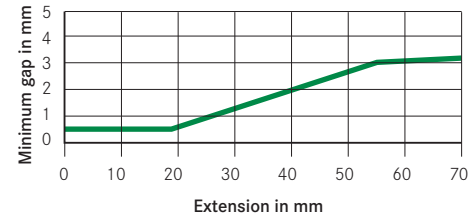
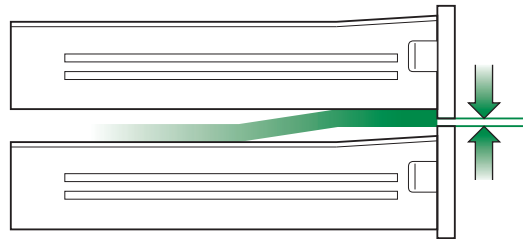
Cabinet Member Mounting Positions 32mm Grid



Minimum Gap

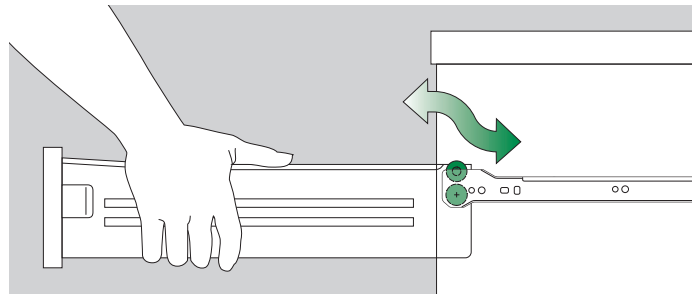
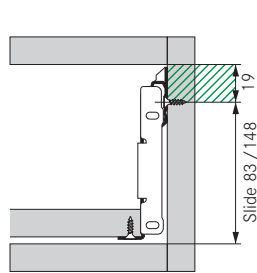
Minimum gaps are required due to parallel self-closing feature

Minimum gap for 19mm front = 0.5mm

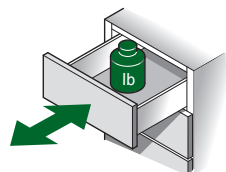


Removal Space

Small space necessary for insertion and removal "roller over axle"



Weight Capacities per Pair of Slides

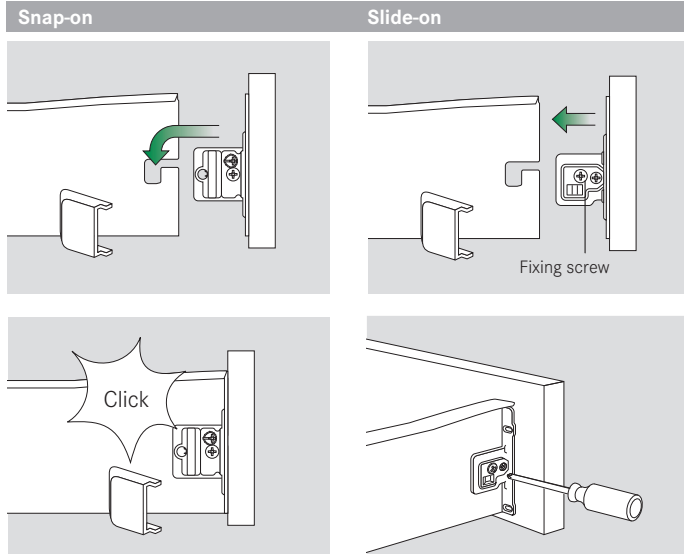


Integra: 100 lb dynamic load rating; 125 lb static load rating

Integra meets and exceeds the minimum requirements of ANSI/BHMA A156.9 Standard, Grade 1

Drawer Front Attachment

Drawer Front Removal

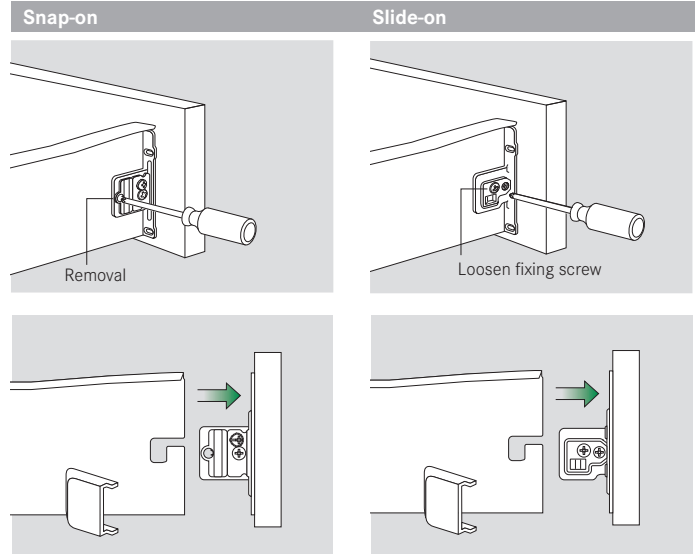


Snap-on

1. Insert front
2. Front clicks on automatically

Slide-on

1. Insert front
2. Tighten fixing screw



Snap-on

1. Loosen screw as indicated
2. Remove front

Slide-on

1. Loosen fixing screw
2. Remove front

Cam Height Adjustment

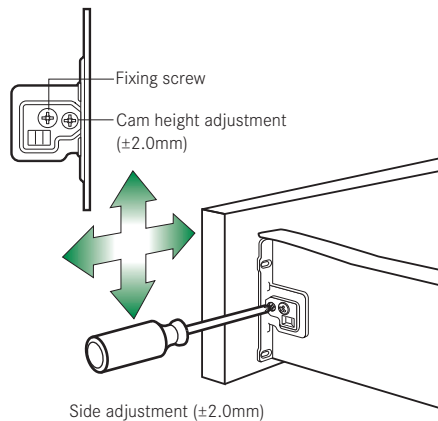
Integra Snap-on and Slide-on

Brackets will be supplied in neutral position. Therefore up and down adjustment is possible.

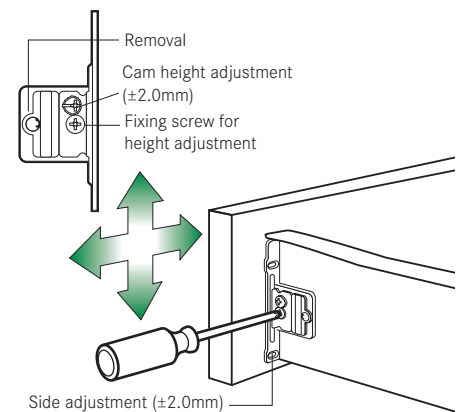
If adjustment is necessary:

1. Loosen fixing screw
2. Adjust cam
3. Tighten fixing screw

Slide-on

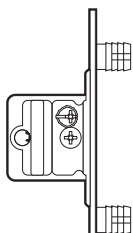


Snap-on



Mounting Tips

Front fixing bracket with press-in dowel

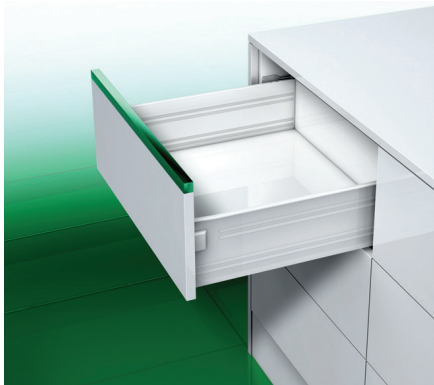


When using front fixing brackets with press-in dowel the bored holes should be countersunk. Hard surface coatings such as melamine can shear off the dowel membranes. This will result in a drastically reduced holding power of the front bracket.

For commercial applications we recommend using a close stop to prevent the drawer front from hitting the cabinet.

Integra Quick 9313

149mm (5 7/8") Side Height



- Metal drawer system
- White baked on epoxy finish
- Single extension, height 149mm (5 7/8")
- Load capacity: 100 lb dynamic
- Installation width 15.5mm (5/8")
- Snap-on bottom mounting
- Made in the USA

Integra 9313 Slide, 100 lb (45 kg)

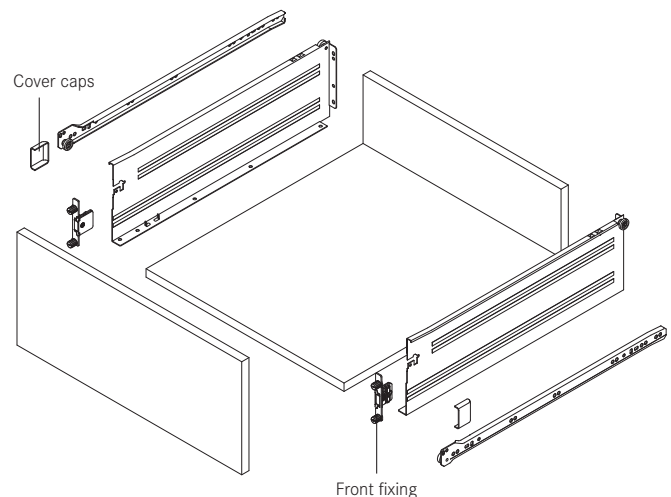


Description	Nominal Length	Item No.	PU
Integra 9313/350	350 (14")	F084075187204	5
Integra 9313/400	400 (16")	9313.400.2.U	5
Integra 9313/450	450 (18")	9313.450.2.U	5
Integra 9313/500	500 (20")	9313.500.2.U	5
Integra 9313/550	550 (22")	9313.550.2.U	5

Front Fixing Brackets

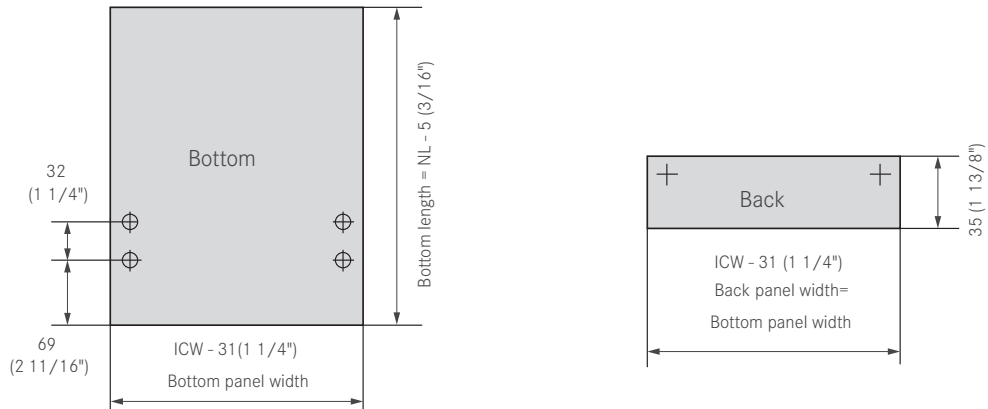


Description	Left Hand Item No.	Right Hand Item No.	PU
(Must order separately)			
1 Snap-on, dowel	9306.L.VE10	9306.R.VE10	10
Snap-on, dowel	F084075178236	F084075179236	250
2 Slide-on, dowel	9206.L.VE10	9206.R.VE10	10
Slide-on, dowel	F084115234536	F084115235536	250
For additional front fixing brackets see page 18			
3 Cover Cap		F084075011111	20

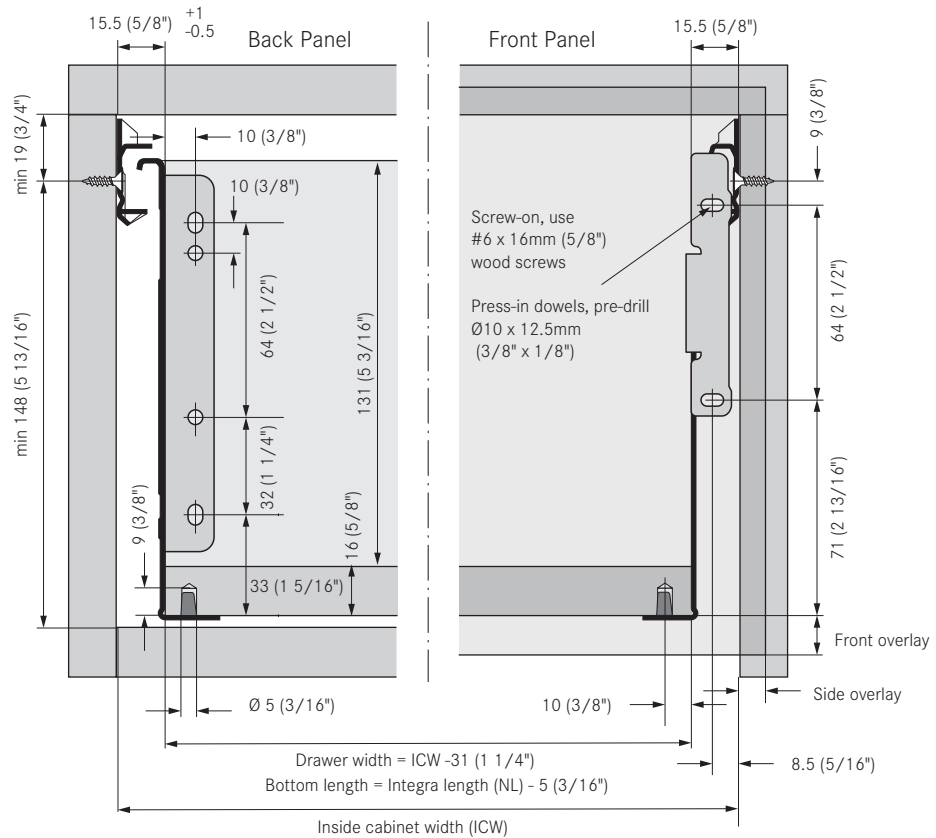


PU - Packaging unit

Drawer Back and Bottom Measurements



Drawer Measurements

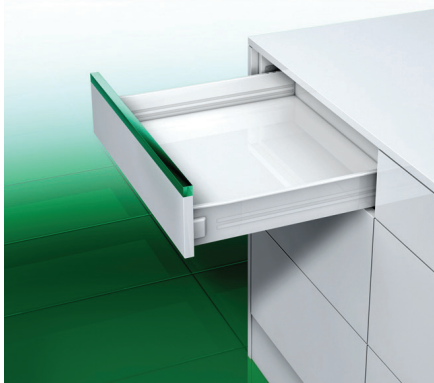


ICW = inside cabinet width

NL = nominal length

Integra Quick 9113

85mm (3 3/8") Side Height



- Metal drawer system
- White baked on epoxy finish
- Single extension, height 85mm (3 3/8")
- Load capacity: 100 lb dynamic
- Installation width 15.5mm (5/8")
- Snap-on bottom mounting

Integra 9113 Slide, 100 lb (45 kg)

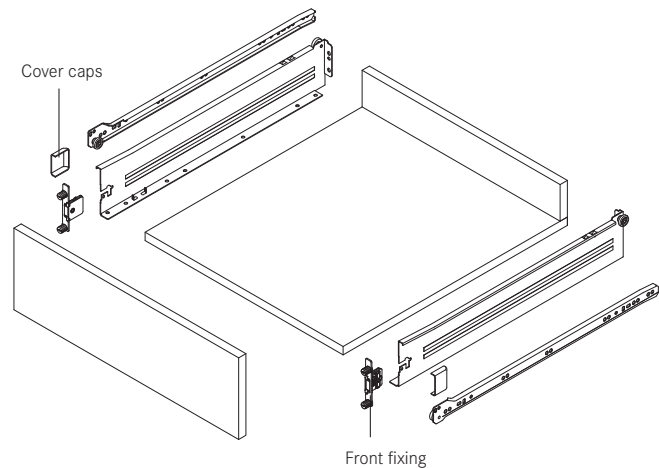


Description	Nominal Length	Item No.	PU
Integra 9113/350	350 (14")	F084075017207	10
Integra 9113/400	400 (16")	F084075020207	10
Integra 9113/450	450 (18")	F084074990207	10
Integra 9113/500	500 (20")	F084074993207	10
Integra 9113/550	550 (22")	F084075025207	10

Front Fixing Brackets

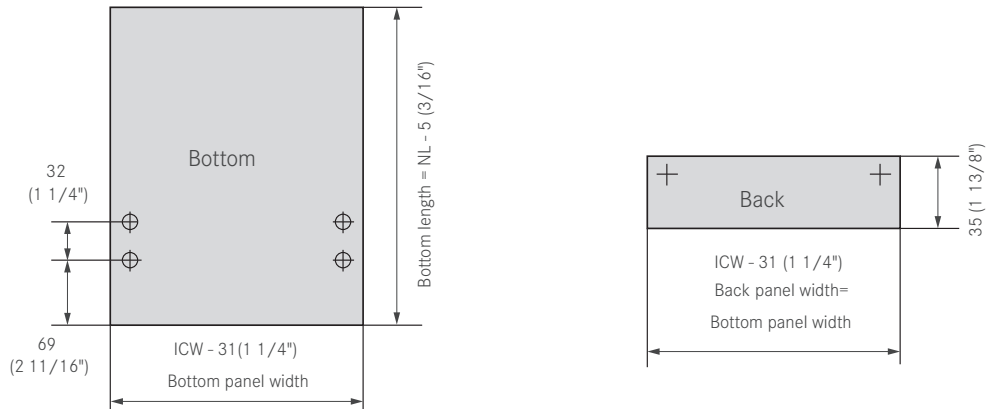


Description	Left Hand Item No.	Right Hand Item No.	PU
(Must order separately)			
1 Snap-on, dowel	9306.L.VE10	9306.R.VE10	10
Snap-on, dowel	F084075178236	F084075179236	250
2 Slide-on, dowel	9206.L.VE10	9206.R.VE10	10
Slide-on, dowel	F084115234536	F084115235536	250
For additional front fixing brackets see page 18			
3 Cover Cap		F084075011111	20

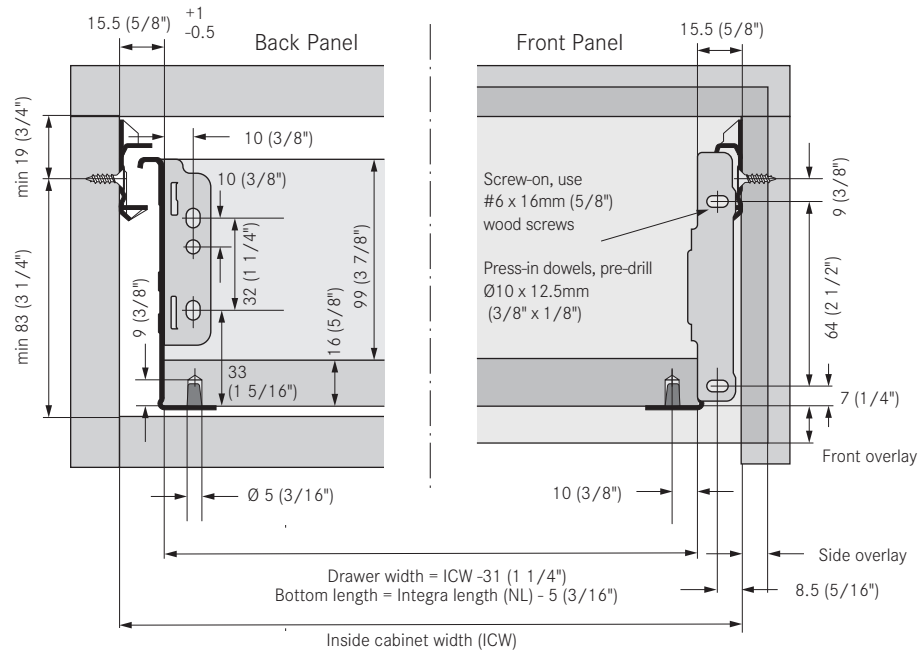


PU - Packaging unit

Drawer Back and Bottom Measurements



Drawer Measurements

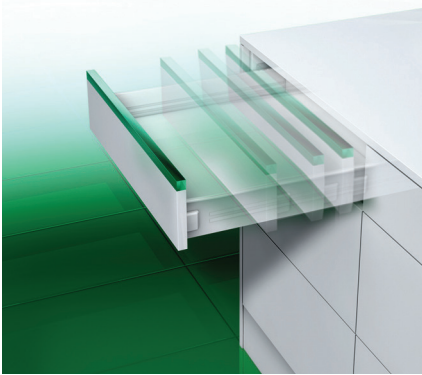


ICW = inside cabinet width

NL = nominal length

Integra Soft-close

Damper set



- Add-on damper creates a smooth soft-close action
- Liquid damper for improved performance
- Three options for various load capacities
- Height adjustment $\pm 2\text{mm}$ via elongated hole
- Secure striker plate engagement
- Actuator design allows for flush mounting
- Set includes: damper and actuator unit

Soft-close Damper



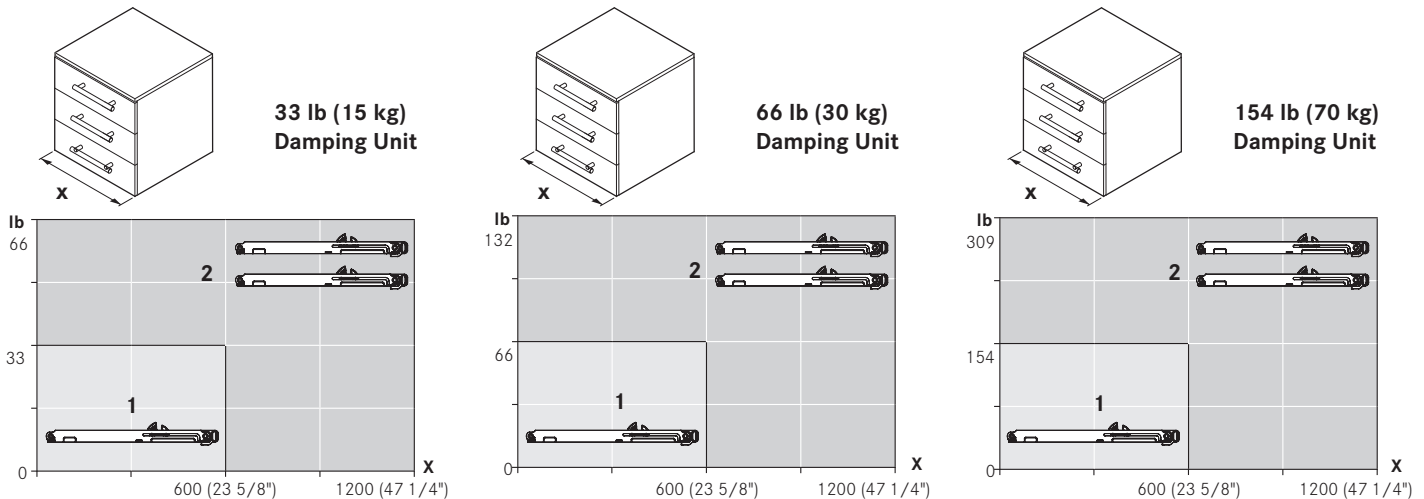
Description	Load Capacity	Item No.	PU
15 kg Damper set	33 lb	02564-11	140
30 kg Damper set	66 lb	02572-11	140
70 kg Damper set	154 lb	02565-11	140

Note: Damper sets do not include screws.

Soft-close Damper Placement

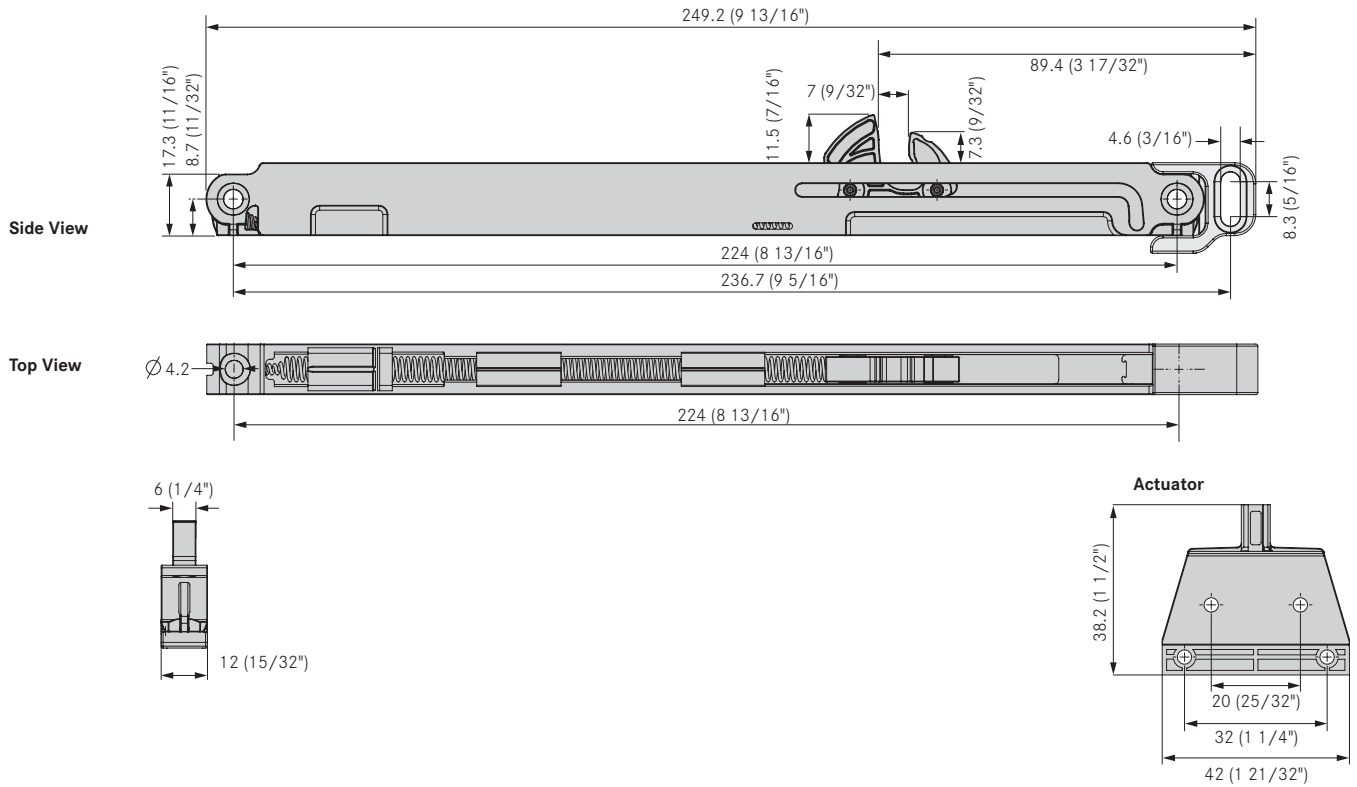


Dampers per Drawer

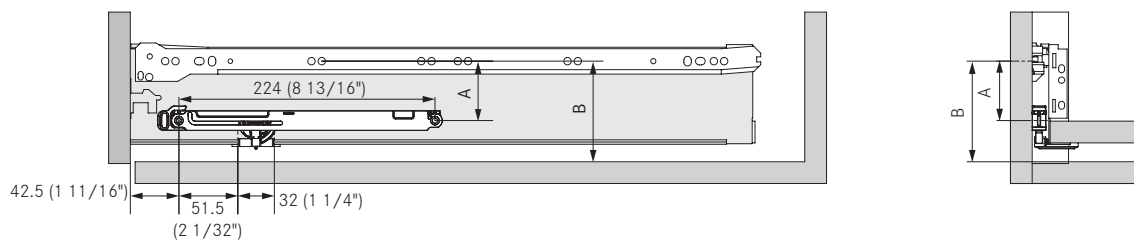


PU - Packaging unit

Product specifications



Mounting dimensions



Recommended screws are:

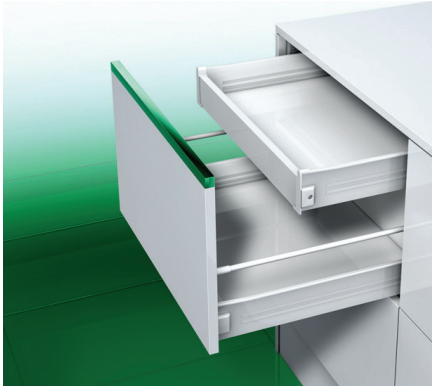
#4 x 1/2" Phillips flat head wood screws

#4 x 3/4" Phillips pan head wood screws

Integra	A	B
85	62	88
149	120	152

Integra Interior Drawer

Front Fixing Adapters

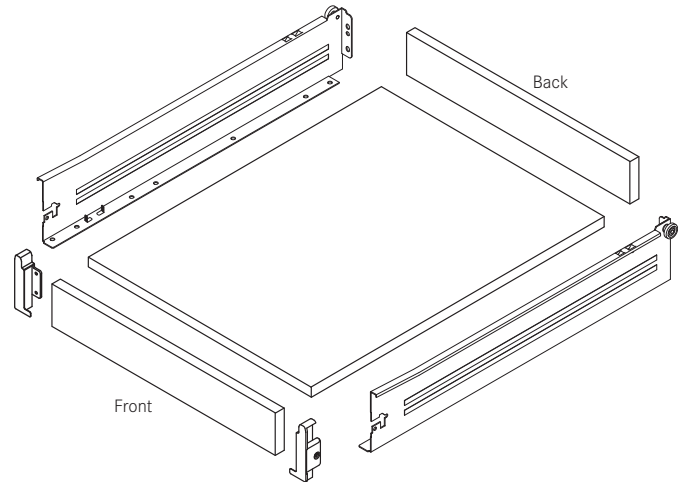


- Front fixing adapters for interior drawers
- For 85mm drawer height
- White
- Screw-on

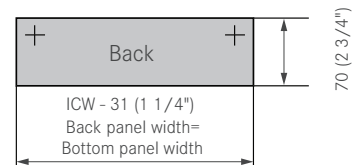
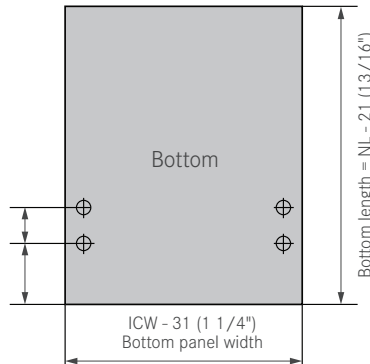
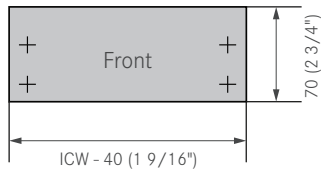
Front Fixing Adapter 9108



Description	Height	Item No.	PU
Front fixing adapter 9108	85mm (3 3/8")	F084074983107	10



Drawer Back, Bottom and Front Measurements



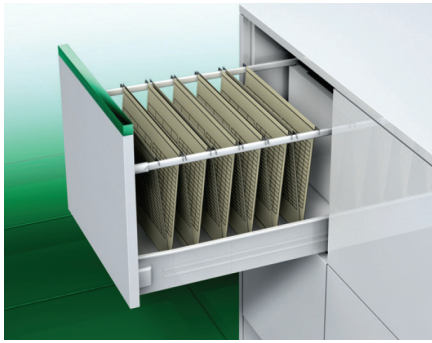
ICW = inside cabinet width

NL = nominal length

PU - Packaging unit

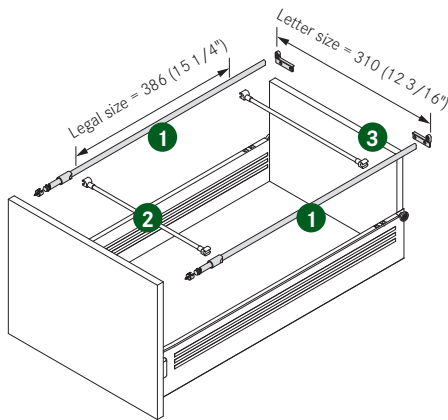
3595 Aluminum File Rail

For Integra



- Keep hanging files organized
- Install file railing system independent from drawer system
- Front tilt adjustment
- Oval aluminum anodized

3595 Railing System



Description	Length	Item No.	PU
1 File Railing Set	500 (20")	F084074850511	20
File Railing Set	550 (22")	F084074851511	20
2 Divider Rail - cut to size	1200 (47 1/4")	F084074854223	20
3 Divider Clips		F084074857133	20

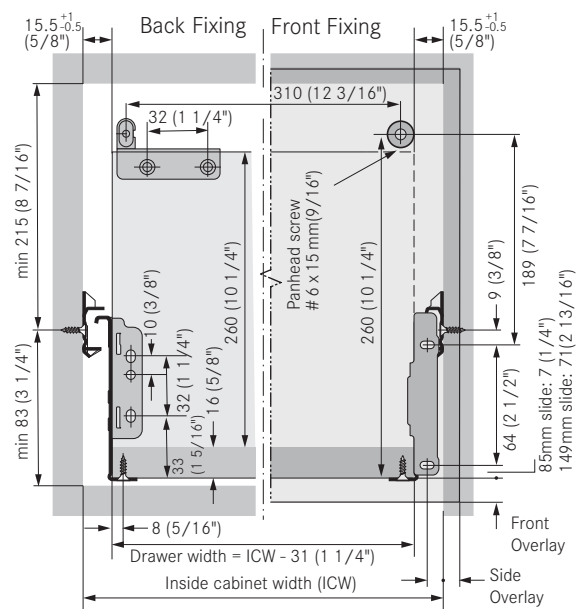
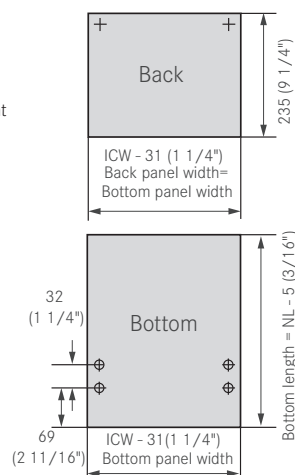
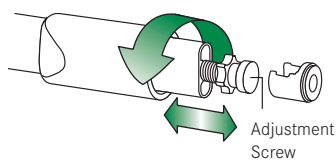
File Railing set consists of:

- 2 Side gallery rails
- 2 Front fixing parts
- 2 Back fixing parts
- 2 Cover caps

Front Tilt Adjustment

Back and Bottom Measurements

Installation Instructions



ICW = inside cabinet width

NL = nominal length

PU - Packaging unit

Accessories and Assembly Aids

Integra

Integra/1700/1702 Drill Jig



- For pre-drilling the cabinet member position.
- For Integra and 1700/1702
- Also works for 1754 and 1800 Roller slide

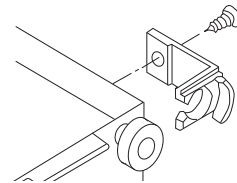
Description	Item No.	PU
1700/1702 Drill Jig	F146083248 101	1

3810/3811 Close Stop



- For Integra single extension
- Ensures 1.5mm (1/16") or 3mm (1/8") gap between front and cabinet.
- Assembles at back panel left and right.

Description	Item No.	PU
3810 Close stop, 1.5mm	F084117240 547	100
3811 Close stop, 3mm	F084074897 123	100



Spacer for Cabinet Members



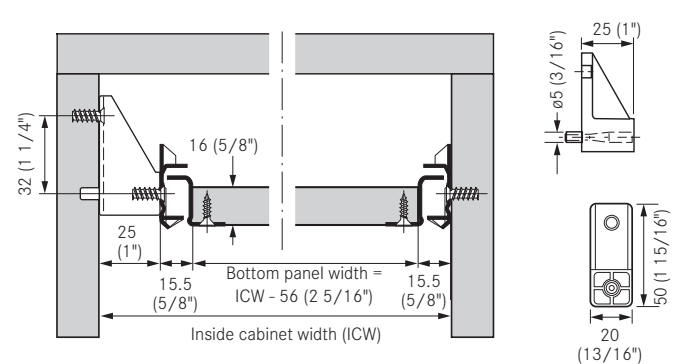
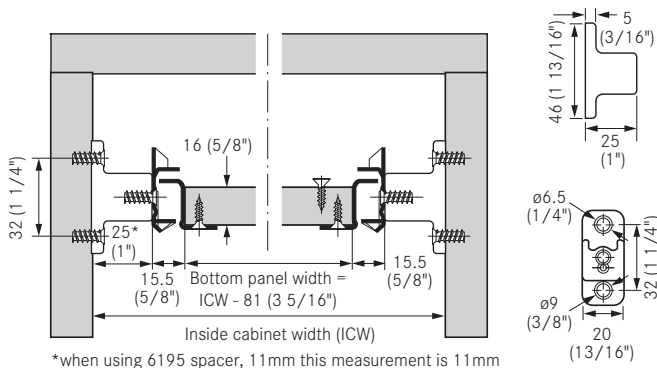
To provide side clearance for interior drawers and pull-out shelves.



Description	Item No.	PU
1 3800 Spacer, symmetrical, 25mm	F084074894 123	100
2 3802 Spacer/pin, asymmetrical, 25mm	F084074895 123	100
3 6195 Spacer, 11mm	89104-39	20

3800 Installation Instructions

3802 Installation Instructions



PU - Packaging unit

Integra

Snap On Front Fixing Brackets for 9113/9313



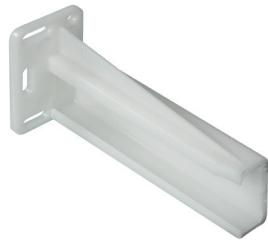
Description	Type	Left Hand Item No.	Right Hand Item No.	PU
Snap-on front fixing bracket	Screw-on	F084115240536	F084115242536	10
Snap-on front fixing bracket	Press-in dowel	9306.L.VE10	9306.R.VE10	10
Snap-on front fixing bracket	Screw-on	F084115240236	F084115242236	250
Snap-on front fixing bracket	Press-in dowel	F084075178236	F084075179236	250

Slide On Front Fixing Brackets for 9113/9313



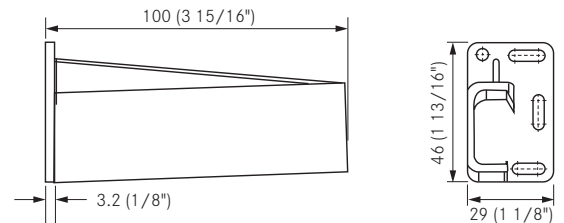
Description	Type	Left Hand Item No.	Right Hand Item No.	PU
Slide-on front fixing bracket	Screw-on	F084115230107	F084115232107	10
Slide-on front fixing bracket	Press-in dowel	9206.L.VE10	9206.R.VE10	10
Slide-on front fixing bracket	Screw-on	F084115231236	F084115233236	250
Slide-on front fixing bracket	Press-in dowel	F084115234536	F084115235536	250

Universal Rear Mounting Socket, 4"



- Drawer slide can slide in or out to achieve different cabinet depth
- Extra long length
- Socket can be stapled or screwed

Description	Item No.	PU
Rear mounting socket, 4", Left	931.248.00.0249	500
Rear mounting socket, 4", Right	931.248.00.0149	500

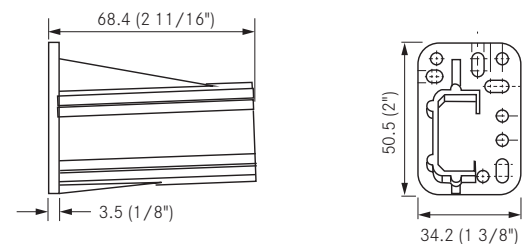


Rear Mount Socket for 1700/1702



- Drawer slide can slide in or out to achieve different cabinet depth
- Socket can be stapled or screwed

Description	Item No.	PU
Rear mounting socket, 1700/1702, Left	499.217.00.0249	500
Rear mounting socket, 1700/1702, Right	499.217.00.0149	500



Notes



GRASS America Inc.
1202 NC Highway 66 South
Kernersville, NC 27284

Phone: 1-800-334-3512
Fax: 1-800-525-8406

www.grassusa.com
info@grassusa.com

